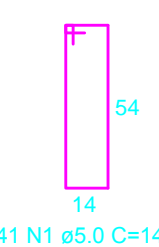
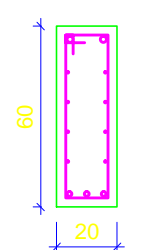
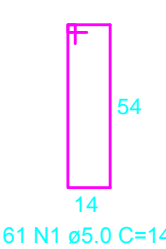
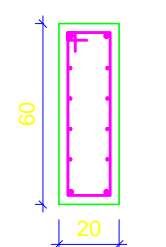


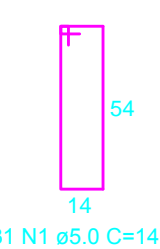
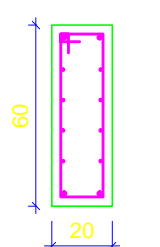
ESC 1:50



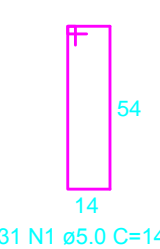
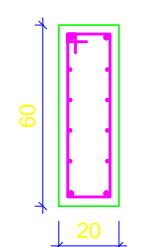
ESC 1:50



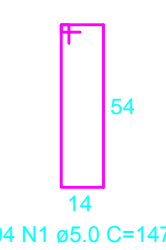
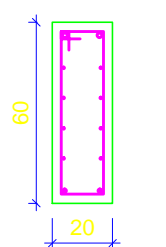
FSC 1:50



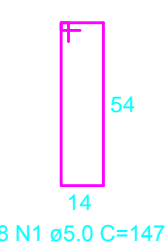
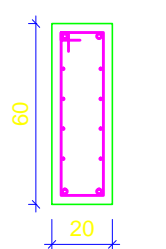
ESC 1:50



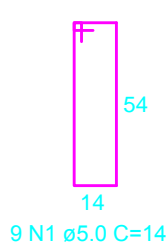
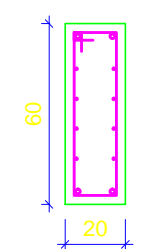
ESC 1:50



ESC 1:50



ESC 1:50



RELAÇÃO DO AÇO						
ELEMENTO	AÇO	N	D (mm)	QUANT	C.UNIT	C.TOTAL
V118	CABO	1	5,0	4	160	540
	CASO	2	6,3	488	148	72224
	CASO	3	6,3	16	1200	19200
	CASO	4	6,3	8	500	4000
	CASO	5	12,5	3	374	742
	CASO	6	12,5	4	361	1444
	CASO	7	12,5	2	416	832
	CASO	8	16,0	2	212	424
	CASO	9	16,0	2	232	464
	CASO	10	20,0	1	330	330
	CASO	11	20,0	4	727	2908
	CASO	12	20,0	2	275	550
V119	CASO	13	20,0	4	700	2800
	CASO	14	20,0	1	320	320
	CASO	15	20,0	4	410	820
	CASO	16	20,0	2	390	780
	CASO	17	20,0	2	435	870
	CABO	1	5,0	4	167	607
	CASO	2	6,3	8	767	6136
	CASO	3	16,0	3	789	2367
	CASO	4	20,0	2	830	1660
	CABO	1	5,0	161	147	23667
	CASO	2	6,3	16	1200	19200
	CASO	3	6,3	8	500	4000
V120	CASO	4	6,3	2	340	680
	CASO	5	6,3	2	350	700
	CASO	6	6,3	2	470	940
	CASO	8	12,5	7	717	2868
	CASO	9	12,5	4	705	2820
	CASO	10	12,5	4	145	580
	CASO	11	12,5	3	380	1520
	CASO	12	12,5	2	360	720
	CABO	1	5,0	31	147	4557
	CASO	2	6,3	3	549	4392
	CASO	3	6,3	2	365	730
	CASO	4	12,5	2	363	1126
V122	CASO	5	12,5	4	150	600
	CABO	1	5,0	10	147	4557
	CASO	2	6,3	8	549	4392
	CASO	3	6,3	2	365	730
	CASO	4	12,5	2	363	1126
	CASO	5	12,5	4	145	580
	CABO	1	5,0	8	147	3318
	CASO	2	6,3	8	1200	9600
	CASO	3	6,3	8	947	4736
	CASO	4	6,3	2	400	800
	CASO	5	6,3	2	480	960
	CASO	6	12,5	8	815	3404
V123	CASO	7	16,0	2	327	654
	CASO	8	16,0	2	420	840
	CASO	9	16,0	2	277	554
	CABO	1	5,0	8	147	1176
	CABO	2	6,3	8	159	1272
	CASO	3	6,3	2	172	344
	CASO	4	16,0	2	230	460
	CABO	1	5,0	9	147	1323
	CASO	2	6,3	8	159	1272
	CASO	3	16,0	1	181	362
	CASO	4	16,0	2	259	518

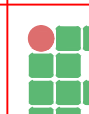
AÇO	DIAM (mm)	C.TOTAL (m)	PESO + 0% (kg)
CA50	6.3	1567	383.5
	12.5	183.6	176.9
	16.0	69.7	110
	20.0	110.4	272.2
CA60	5.0	557.6	86

Volume de concreto (C-30) = 11.48 m³
Área de forma = 133.88 m²

REVISÕES DA PRANCHA			
Nº	COMENTÁRIO	AUTOR	DATA
01	Versão original - Detalhamento em conformidade com os aspectos construtivos	Pablo Ferreira	15/03/2021

ASSINATURA DO RESPONSÁVEL TÉCNICO

ASSINATURA DO RESPONSÁVEL DA INSTITUIÇÃO

PRANCHA		PROJETO: Projeto Estrutural do Refeitório do Campus de Guarabira do IFPB				
16/22		PROPRIETÁRIO: IFPB - Campus Guarabira				
		ENDEREÇO: Rua Professor Carlos Leonardo Arcoverde, s/n, Rodovia PB 057 - KM02				
	DATA	RESPONSÁVEL	CREA	RUBRICA	OBSERVAÇÕES: - Verificar todas as medidas no local. - Em caso de dúvida, contactar o responsável técnico habilitado.	
DESENHO	03/2021	Pablo Ferreira - Eng. civil	160528594-6/PB			
PROJETO	03/2021	Pablo Ferreira - Eng. civil	160528594-6/PB			
ESCALA: 1:50 1:25 ---		DESENHO: Vigas das Coberturas - Parte 3 Seção A-A Legendas e Indicações			 INSTITUTO FEDERAL Paraíba	
						ARQUIVO
		FIRMA			PMG	